

Klinik Aarau | Schachenallee

After 30 years of successful operations, the Hirslanden Klinik Aarau has to adapt to the current requirements of the health sector. With the "Schachenallee" project, the Hirslanden Klinik Aarau is renewing a large part of its core medical infrastructure. It is creating opportunities for new services as well as the expansion of existing ones. In addition to the renewal of existing wings, the Klinik will be extended with a new building. The architecture company Schneider & Schneider, selected by means of an architecture competition, is architect and general planner. waldner partner has been supporting the project team on the client side since 2020.

Client

Hirslanden AG

Architect

Schneider & Schneider Architekten, Aarau

Location

Aarau, Switzerland

Use

New hospital wing with operating theatres, wards, central sterile services department and gastronomy

Key Dates

2020 | Concept design

2021 | Design-to-cost phase & concept design 2

2022 | Developed design

2023 | Start of construction

2027 | Commissioning (planned)

Costs

CHF 128 million for new building and renovation

Our Role

Client-side project manager design and realisation; project office manager; use and operations support

Our Tasks

Support with compiling and documenting user requirements and operational design requirements

Support with operational processes and planning

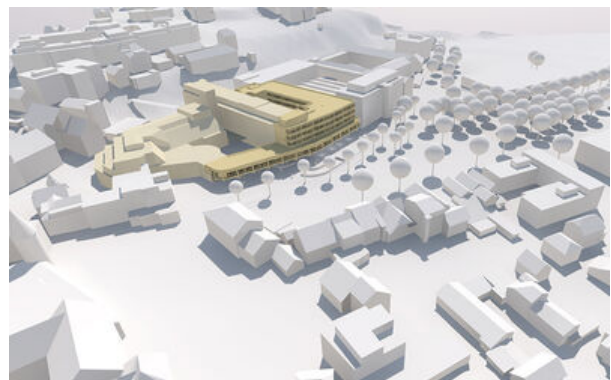
Support with project management

Coordinating the general planner and specialists

Project evaluation

Project-related quality management (PQM)

Risk analyses



Cost control

Time- and quality-planning incl. reporting

Photos/Visualisations

© OVI Images GmbH / Schneider & Schneider Architekten ETH

BSA SIA AG